

Introduction

What is ELEMENT?

ELEMENT: EU-Lebanon-Egypt Mobility Exchange NeTwork is an Erasmus Mundus Action 2 Project which provides funding for student & staff exchange mobility between Egypt, Lebanon and the EU.

About the scholarships

The scholarships are very comprehensive and cover course fees, return travel, insurance and living subsistence. This latest cohort will offer 22 scholarships for Lebanese scholars wanting to study/ research/ train in the EU.

Eligibility & Application

Full details on eligibility can be found on the project website. If you meet the criteria of the eligibility section you can complete the application online at www.em-element.eu

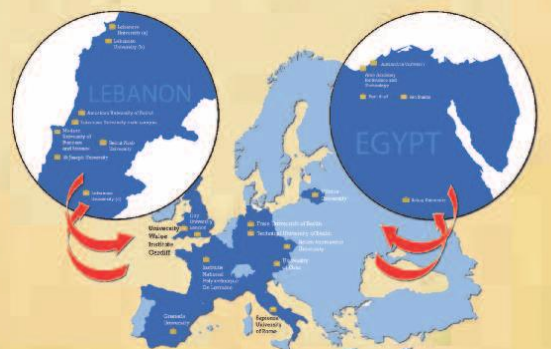
When to apply

Apply online between 30th August 2013 and 14th October 2013.

Destinations

European partner universities:

- Adam Mickiewicz University, Poland
- City University London, UK
- Freie Universität Berlin, Germany
- Université de Lorraine, France
- Sapienza University of Rome, Italy
- Technische Universität Berlin, Germany
- University of Granada, Spain
- University of Graz, Austria
- Cardiff Metropolitan University, UK
- Vilnius University, Lithuania

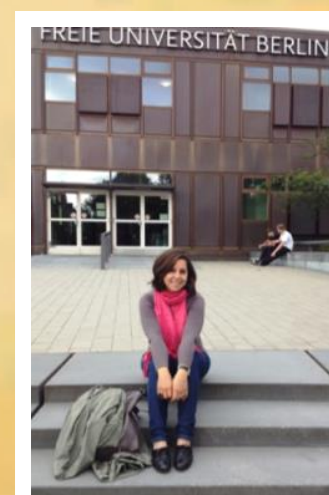


Durations

The duration of mobility depends upon both the direction and academic level of mobility. However the project aims to be flexible and therefore offers its scholars study options ranging from 1 semester to 36 months.

To find out what scholarship durations are on offer to you, please visit: www.em-element.eu

'Berlin has definitely opened a new chapter in my life, a chapter that could not have been otherwise written without the ELEMENT generous and prestigious scholarship.' **Amal Dib, Freie Universität Berlin, Germany.**



Financial support

Mobility Level	Monthly living subsistence
Undergraduate	€1000
Master	€1000
Doctorate	€1500
Post-Doctorate	€1800
Staff	€2500

Travel subsidy

Scholars will receive one return travel ticket to their Host University including local travel to and from the airport upon arrival and departure, up to the travel budget threshold.

Insurance

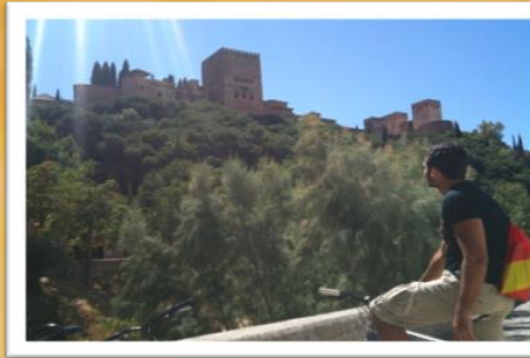
Scholars receive travel, health and dental cover for the duration of their exchange.

Participation Costs

Participation Costs (tuition and/ or registration fees, additional library, student unions, laboratory consumable costs, residence permit, language courses costs) up to maximum of 3,000 euros.

'This scholarship is my first step to reach my dream and to prove that nothing is impossible.'

Nour Al Bittar, Vilnius University



'Being at the University of Granada with its highly reputable and prestigious faculty members along with the health research environment that is dynamic and superior made this place an ideal destination for seeking graduate studies.'

Mahmoud Muhieddine Slim, University of Granada

With a wide range of academic disciplines across a selection of prestigious universities, ELEMENT offers new academic challenges whilst exploring new countries and cultures.

For full details on the project including eligibility, application forms and contact details for the contact person at your university, please visit:
www.em-element.eu

**We look forward to
receiving your
application!**

Calling all Lebanese applicants to
apply for the 3rd cohort of
ELEMENT EU-Funded
scholarships for Study/ Research



Funded by the European Commission



**Coordinated by
Cardiff Metropolitan University**

